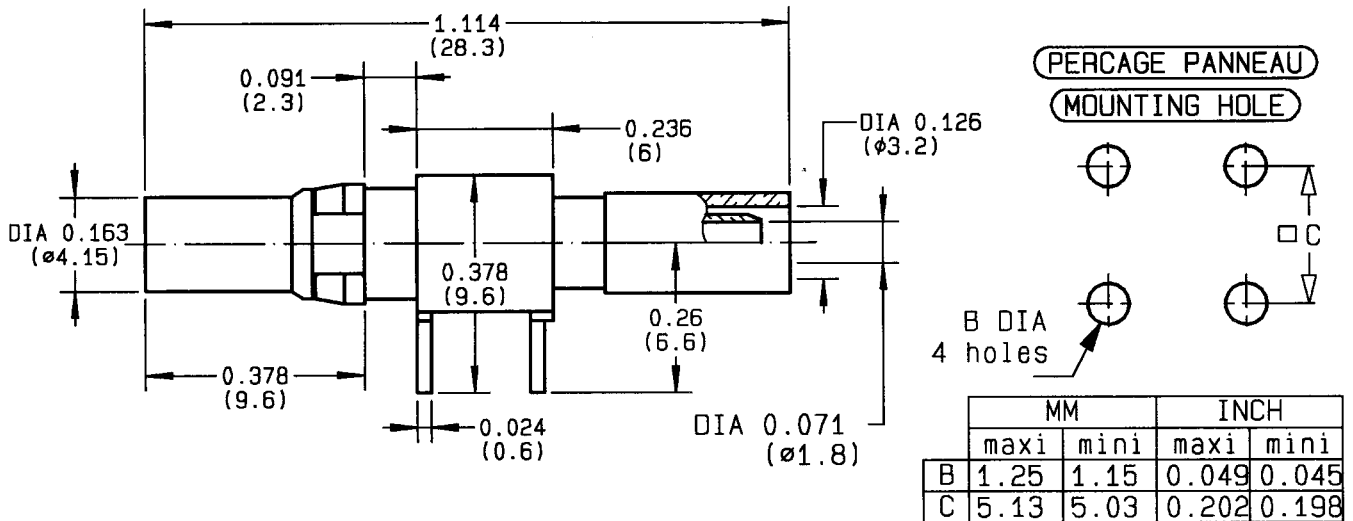


**PCB RECEPTACLE CRIMP TYPE
 CABLE 2.6/50**


CABLES : R6179 KX22 L910/22 KX3

CHARACTERISTICS

NOMINAL IMPEDANCE	50 Ω
FREQUENCY RANGE	0-2 GHz
TEMPERATURE RATING	-55/+125 °C
VSWR	1.1 + .1 x F(GHz)Maxi
RF INSERTION LOSS	- \sqrt{F} (GHz) dB Maxi
VOLTAGE RATING	- Vrms Max
DIELECTRIC WITHSTANDING VOLTAGE	750 Vrms min
INSULATION RESISTANCE	1000 M Ω min
HERMETIC SEAL	- cc/s - Atm.cm3/s
LEAKAGE (pressurized only)	- psi - MPa
WEIGHT	0.1071 Oz 3 g

STANDARDISATION
CABLE RETENTION
CENTER CONTACT RETENTION

Axial force - mating end

Axial force - opposite end

Torque (Min)

RECOMMENDED TORQUES

Mating

Panel nut

Crimp nut

 8.58 lb min
 40 N

 0 NA 1' min
 N

 0 NA 1b min
 N

 0 NA 1inch.oz
 cm.N

 0 1inch.lb
 cm.N

 0 1inch.lb
 cm.N

 0 1non.1b
 cm.N

CONSTRUCTION

CONNECTOR PARTS	MATERIALS	FINISH
BODY	BRASS	GOLD 1.3 μ m
OUTER CONTACT	-	-
CENTER CONTACT	BERYLLIUM COPPER	GOLD 2.5 μ m
INSULATOR	PTFE	-
-	-	-
-	-	-
-	-	-
-	-	-
-	-	-

ISSUE	REVISION No	DESCRIPTION	BY	DATE
-	-	-	-	-
9430	-	Add dimensions	GAUTIER	25-07-94
9413	-	Add VSWR + Center contact retention : NA	GAUTIER	30-03-94

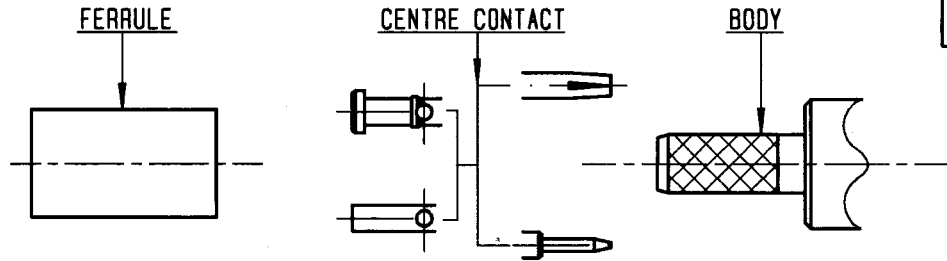
Initiated on 24/02/94

The information given here is subject to change without notice. Design changes may be in order to improve the product.



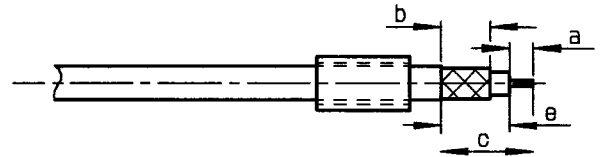
Approval by BAFFERT

GAUTIER



①

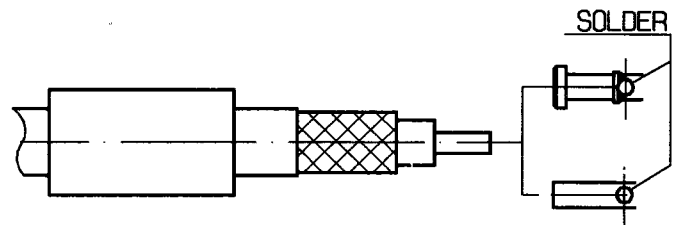
Slide onto the cable the ferrule .
Strip the cable .



Stripping	a	b	c	d	e
inch	0.106	0.256	0.48	0	0.374
mm	2.7	6.5	12.2	-	9.5

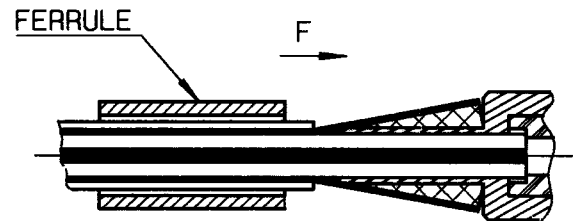
②

Slide on centre contact until it bottoms against cable dielectrique .
Solder center contact .
Clean soldering area .



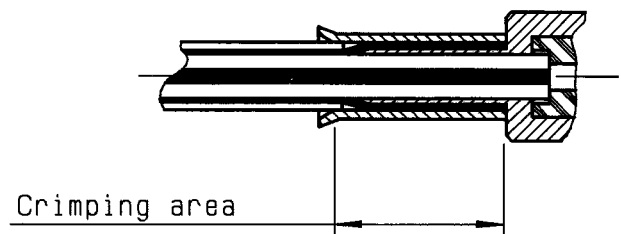
③

Fan the braid .
Slide cable into the body until bottoms against insulator .
Slide ferrule over the braid .
(In direction F)



④

Crimp the ferrule with crimping tool R 282 211 000 (Hex. : 0.128) or crimping tool R 282 293 000 (M22520/5-01) + dies R 282 235 003 (M22520/5-03)
Cut the excess of braid .



4112 9211